

# NOL18 / NOL30 / NOL35

## Light Oil Burner

### 160kW - 891kW



#### **NOL18 / 30 / 35 Oil Burner features:**

- Energy saving and compatible with environmental requirements
- Quiet in operation and designed for easy maintenance
- Reliable and trouble-free
- Designed and approved in accordance with the European Standard EN 267
- Suitable for high resistance boilers
- Industry standard components easily available
- Designed for 2 stage (high/low) operation  
(See separate data sheet for modulation)
- Plug-in contact facilitates the installation
- Fuel - Light Oil (Class D) (1.5 – 5.5 cSt at 40°C)
- Optional Extras
  - Air inlet silencer
  - Water level control (AOTC) panel
- All kW ratings are nett CV



For more information on all Nu-way products  
please visit [www.nu-way.co.uk](http://www.nu-way.co.uk)

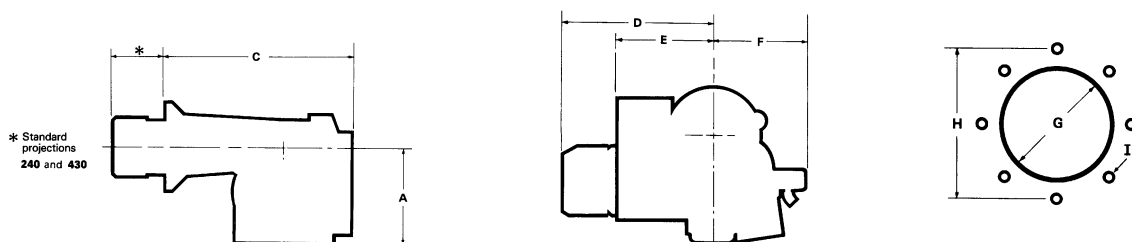
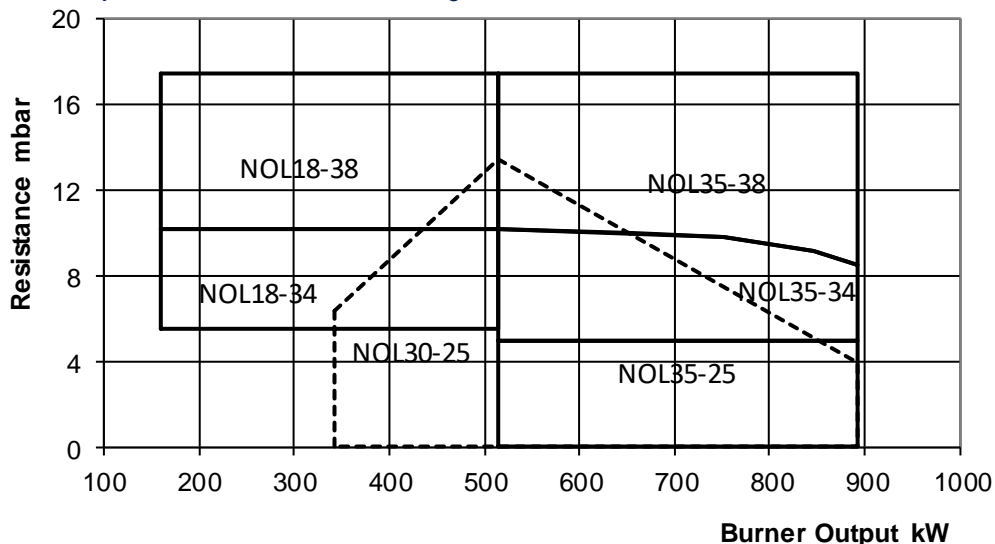


**Enertech Group**

Type		NOL18-34	NOL18-38	NOL30-25	NOL35-25	NOL35-34	NOL35-38
Capacity	kW	160-444	160-510	342-891	514 - 891	514 - 891	514 - 891
Fan Motor	V/ph/Hz	380-420 / 3 / 50	380-420 / 3 / 50	380-420 / 3 / 50	380-420 / 3 / 50	380-420 / 3 / 50	380-420 / 3 / 50
	kW	2.2	3.0	1.1	1.1	2.2	3.0
Start current	A/each phase	25	35	15	15	25	35
Run current	A/each phase	4.6	6.1	2.5	2.5	4.6	6.1
Cable size	mm <sup>2</sup>	1.5	1.5	1.5	1.5	1.5	1.5
Fuse	HRC (A)	15	20	10	10	15	20
Control unit		LAL	LAL	LAL	LAL	LAL	LAL
Fuel pump		Suntec	Suntec	Suntec	Suntec	Suntec	Suntec
Fuel connection	inch BSP	0.5	0.5	0.5	0.5	0.5	0.5
Control Options		2 Stage/Mod	2 Stage/Mod	2 Stage/Mod	2 Stage/Mod	2 Stage/Mod	2 Stage/Mod
Noise @ 1m	dBA	84	86	78	78	84	86
NOx*	mg/kWh	<120	<120	<120	<120	<120	<120
Gross weight	kg	99	113	53	53	99	113
Volume	m <sup>3</sup>	0.98	0.98	0.78	0.78	0.98	0.98

Other electrical supply options available on request.

\* Typical NOx levels subject to combustion chamber design and site conditions.



Burner	A	C	D	E	F	G	H	I
NOL18-34	387	686	420	340	337	230	305	10
NOL18-38	480	737	457	340	350	230	305	10
NOL30-25	314	542	307	340	300	230	254	10
NOL35-25	314	542	307	340	300	230	254	10
NOL35-34	387	686	420	340	337	230	305	10
NOL35-38	480	737	457	340	350	230	305	10

Enertech Limited, Ten Acres, Berry Hill Industrial Estate,  
Droitwich Spa, Worcestershire, WR9 9AQ

tel: +44 (0) 1905 794331 • fax: +44 (0) 1905 794017  
email: info@nu-way.co.uk • web: www.nu-way.co.uk



Enertech Group

23-10-2018